

# CenterRad Streyt

## Installation Instructions

**IMPORTANT:** For the correct installation of radiators it is essential that the fixing of the radiator is carried out in such a way that it is suitable for intended use AND predictable misuse.

A number of elements need to be taken into consideration including the fixing method used to secure the radiator to the wall, the type and condition of the wall itself, and any additional potential forces or weights that may happen to be applied to the radiator, prior to finalising installation. Alternative products may be more suitable for use in an environment where vulnerable users may come in contact with the radiator.

**NB:** Radiators should always be installed by a heating professional.

### 1 Unpack and inspect the radiator and check all contents are present.

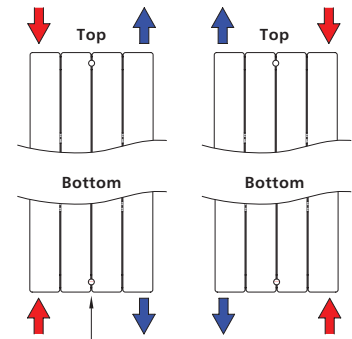
### 2 Connection options:

#### 4 x 1/2" BSP Connections

All CenterRad Streyt vertical tubular radiators are manufactured with an internal baffle to help with internal water flow. The baffle is located in the centre of the header between the flow and return connections and is indicated by a sticker.

#### Connection options

Radiator must be rotated 180° (eg baffle at the top) if top connections are to be used.

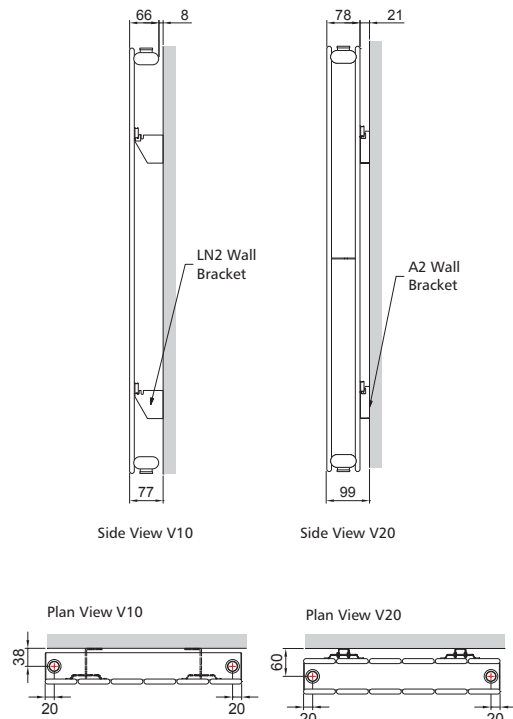


Baffle located in centre of header between flow and return (indicated by sticker)

Radiator plug and vent kit can be installed either side.



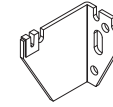
### 3 Fixing dimensions:



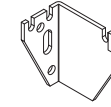
### 4 Standard brackets:

Your CenterRad Streyt radiator comes with the correct quantity of brackets according to the size of radiator you have.

#### Use on V10 Model



Left Hand LN2 Bracket



Right Hand LN2 Bracket

#### Use on V20 Model



A2 Bracket

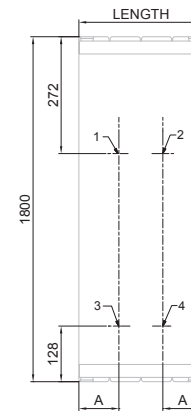
#### Note:

An air vent and plug are packed with every radiator.

Fixings are not supplied with radiator.

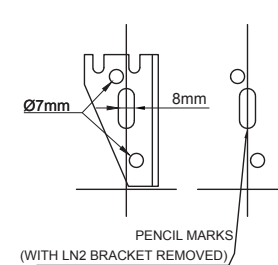
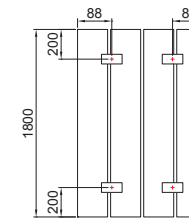
### 5 Bracket positioning:

#### Radiator Wall Location Fig. 1

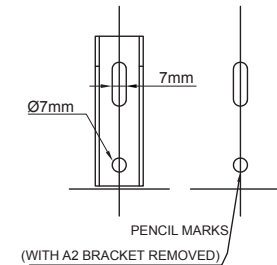


DIMENSION A  
V10: 100mm  
V20: 88mm

#### Mounting Lug Locations Fig. 2 All Radiator Lengths



PENCIL MARKS  
(WITH LN2 BRACKET REMOVED)



PENCIL MARKS  
(WITH A2 BRACKET REMOVED)

For touch up paint, please email: [centerrad.uk@purgomgroup.com](mailto:centerrad.uk@purgomgroup.com)