

CHECKLIST

1. Check enclosure dimensions are compatible with the shower tray.
2. Check for any transit damage or product defects
PLEASE NOTE: these procedures should be carried out prior to installation.

Fitting the product is acceptance of quality.

All guarantees are void unless these instructions are followed.

STEAM CABINS

PLEASE NOTE: when installing this product in conjunction with a steam unit ensure that the steam outlet is at a minimum height of 300mm from the top of the tray.

SUNKEN FLOOR INSTALLATION

1. Cut flooring, allowing clearance on width and length of tray to enable tray to slot into the gap.
2. Ensure the joists are adapted to give complete support to the shower tray.
3. Install as per flat to floor installation.

MAINTENANCE

As good as new finish can be maintained by following these guidelines:

1. Dry out the tray fully after every use to avoid the build up of limescale and soap residue.
2. Clean the shower tray regularly with a damp cloth or sponge followed by a soft dry cloth.
3. Occasionally use a none abrasive cleaner to remove any stubborn stains.

PANEL KIT 4

- 10 x Leg riser kit
- 10 x Base feet
Featuring a square web and holes for 6mm panel rods.
- 10 x Floor feet
- 10 x M12 screwed bars
- 20 x M12 half nuts
- 6 x M6 screwed bars
- 12 x M6 nuts
- 7 x Panel holders
- 9 x Double sided adhesive strips
- 2 x Free form panel holders
- 30 x ¾ Inch size 10 Self tapping screws
- 8 x Floor fixing clips



MARKET LEADER BY DESIGN

JT40[®] FUSION
COMBINING TECHNOLOGY WITH DESIGN

Just Trays Ltd
Whitehall Ind. Est.
Ashfield Way
Farnley
Leeds
LS12 5JB

Tel: 0844 257 7253

Fax: 0113 201 5099

Email: info@just-trays.co.uk

just-trays.co.uk



As our products are continually updated all details are subject to change without prior notice. The photographs included are for general guidance only and colours are limited to the restraints of the printing process. E&OE.

CUSTOMER 25 YEAR GUARANTEE

Just Trays Ltd guarantees all JT40 FUSION™ products against faulty materials or manufacture for a period of 25 years from date of installation provided that it has been installed, used and maintained in accordance with the manufacturers instructions. If in our opinion the product fails under those conditions, Just Trays Ltd will undertake to repair or replace the product at our option. Should a claim arise, we request that the following conditions be satisfied.

1. Proof of purchase at the time of claim. 2. The product has been fitted/installed in accordance with our fixing instructions, local by laws and general good plumbing practice. 3. The product has been maintained and cared for in accordance with our instructions. If in our opinion the product has been modified, misused, neglected, willfully or accidentally damaged, we can accept no responsibility for failure. 4. Just Trays Ltd, must be given the opportunity to inspect the product in the installed condition.

Should Just Trays Ltd carry out work as a result of a claim but subsequently it is revealed that the product has been abused or improperly installed, we reserve the right to charge the customer for all expenses incurred. The liability of Just Trays Ltd is limited to the product supplied by Just Trays Ltd, and does not extend to consequential loss or damage arising from the defective product. All after-sales enquiries must be directed to the stockist where the product was purchased. Just Trays Ltd believes in continuous improvement. If in our opinion the product has failed under the terms of the guarantee and a replacement is offered but identical goods are no longer available Just Trays Ltd will replace it with our nearest equivalent product. This guarantee, which is effective for products purchased after September 2009 states our entire liability and is offered to customers acquiring our products as consumers, not in the course of trade or business. This guarantee does not affect your statutory rights. This guarantee is only applicable in the UK and Republic of Ireland.



MARKET LEADER BY DESIGN

JT40[®] FUSION
COMBINING TECHNOLOGY WITH DESIGN

INSTALLATION
INSTRUCTIONS



MADE IN THE UNITED KINGDOM

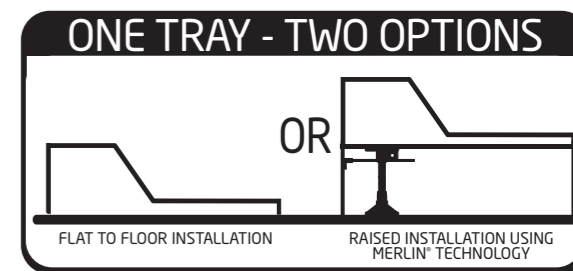


MARKET LEADER BY DESIGN

JT40[®] FUSION
COMBINING TECHNOLOGY WITH DESIGN

INSTALLATION
INSTRUCTIONS

The following booklet features installation instructions for our new JT40 Fusion shower tray for both flat to floor installation and raised installation using Merlin™ technology.



MERLIN™ PANEL KIT CONTENTS

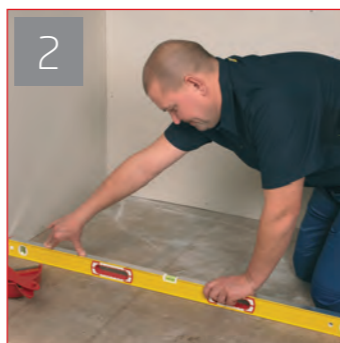
PANEL KITS 1, 2 & 3

- 8 x Leg riser kit
- 8 x Base feet
Featuring a square web and holes for 6mm panel rods.
- 8 x Floor feet
- 8 x M12 screwed bars
- 16 x M12 half nuts
- 5 x M6 screwed bars
- 10 x M6 nuts
- 7 x Panel holders
- 9 x Double sided adhesive strips
- 2 x Free form panel holders
- 24 x ¾ Inch size 10 Self tapping screws
- 8 x Floor fixing clips

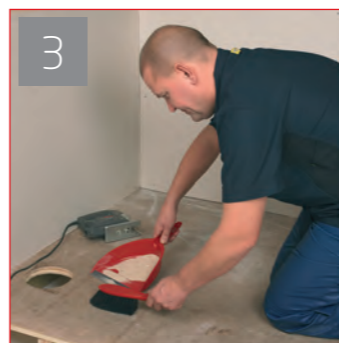
FLAT TO FLOOR INSTALLATION

1 WE RECOMMEND THAT YOU USE A JT40 WASTE.

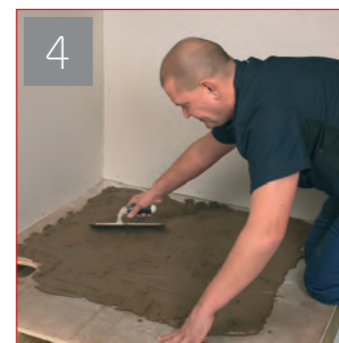
Remove protective coating only from the immediate area's surrounding the waste and those sides of the tray which will be against a wall. Fit the waste using manufacturers instructions.



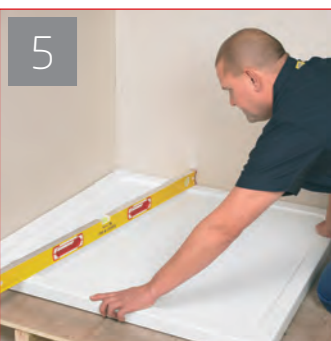
Ensure that the location of the shower tray is level and free of all debris before commencing installation



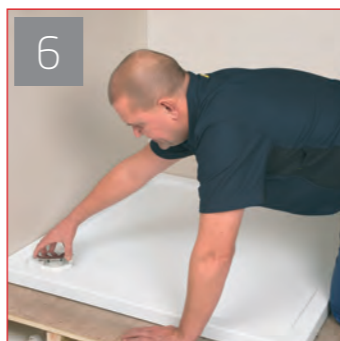
Prepare a rigid base of 10mm marine plywood, incorporating a suitable recess or cut out for the waste and fix to floor ensuring that the finished base is level and free of debris.



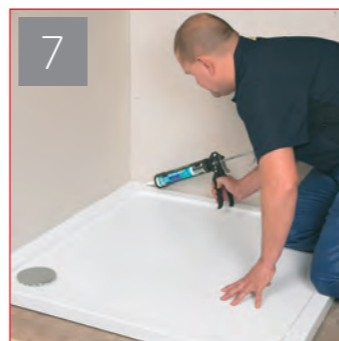
Cover the marine ply base with a 15mm depth of weak cement mix (sand / cement ratio 5:1).



Place the shower tray with the fitted waste onto the cement bed and apply gentle pressure with the base of the hand to force the tray into position then finally level the tray and allow to set.



When shower tray is set remove the remainder of the protective film, connect the waste pipe and check for leakage.



Seal joints between tray and wall with an anti fungi silicone sealant and allow to set, cover the tray with a soft dust sheet.

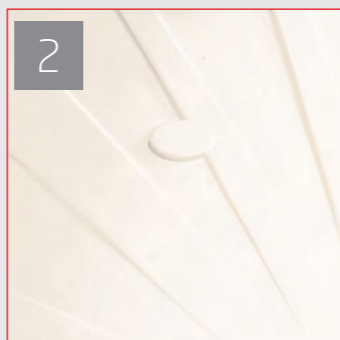


Tile and seal joints with an anti fungi silicone sealant and allow to set.

RAISED INSTALLATION



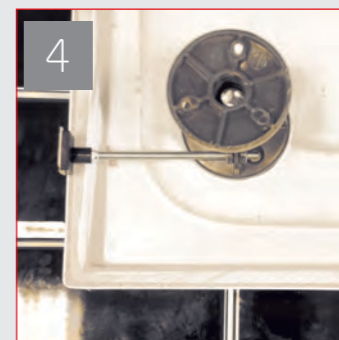
Lay the tray in position on the prepared floor and scribe a pencil line around the outside edge as in FIG 1 to mark the position of the tray, this will form the guide for the floor clips.



Turn the tray over, Note the raised circles in the base of the tray FIG 2, these are the feet location points and the feet must be fitted to these points and ONLY these points since they have been strategically placed to eradicate any flexing within the shower tray.



Screw the feet in position with the screws provided, if any are lost or missing use only the same size screws as those provided, 3/4 inch size 10 self tapping screw. Do not over tighten. Ensure you are using the correct foot that features the square web and holes for panel rods.



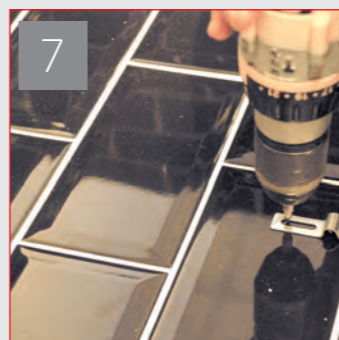
Ensure that the panel fixing holes are located at 90° to the edge of the tray as shown in FIG 4.



Fit the panel fixing rods, using a level. Ensure the face of the panel holder is lined up with outside edge of the tray as shown in FIG 5.



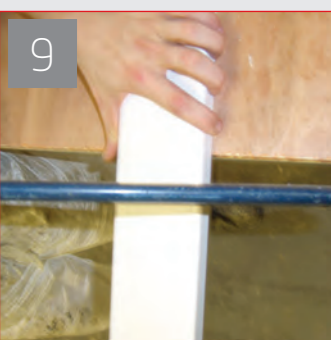
When all feet have been fitted level them up so that the base of the foot measures 95mm from the underside edge of the outside wall of tray.



Screw down the floor fixing clips so that the edge of the clip is in line with pencil line made in FIG 1. Use all the clips provided and spread them equi-distant along both open sides of the tray.



Turn the tray over and level both ways. When level fix the inaccessible legs with silicon sealer or no nails type of adhesive. Do not fix the central leg at this point. Screw the accessible legs to the floor, then adjust the central leg so that it forms a stabilising point.



Mark the length of panel required for both edges and cut with a junior or standard hacksaw.



Please note on square and rectangle trays one length of panel has a return rebated end. Ensure that this end is included in the length required. Do not cut off and discard.



Fix the double-sided adhesive pads provided to the face of the panel holders.



Fix the panels starting with the end panel or in the case of squares the panel with the rebated end by pushing firmly under the floor clips, then on to the adhesive pads and fix the front panel.

Your shower tray raiser kit is now complete. Finish the installation of the tray as per shower tray fitting instruction point 8.